



VPN and TELNET Connection Instructions

The following contains instructions on steps to configure and use a VPN (Virtual Private Network) connection. These steps are specific to connecting to a VPN server (vpn.mdeca.org) located at MDECA and then creating a CONNECTION TO MDECA THAT IS INSIDE THE NETWORK by using Reflections.

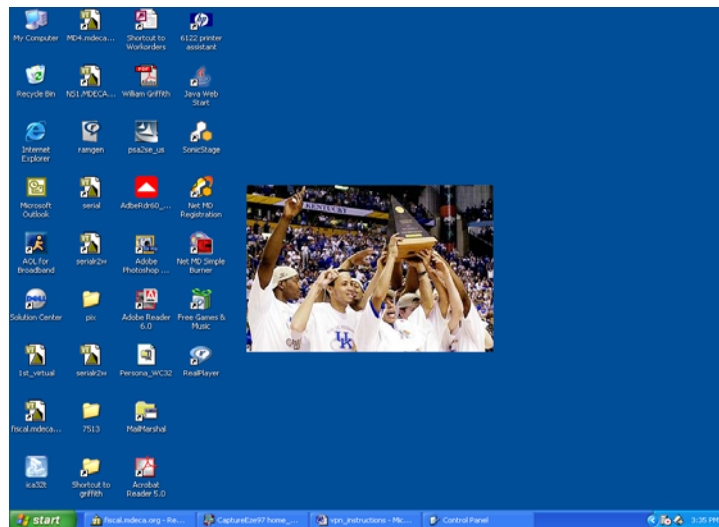
The instructions are based on the Windows XP Professional Operating System.

Information includes:

- I) Setup of VPN connection for your workstation
- II) Establish Connection to VPN.MDECA.ORG
- III) TELNET TO MDECA

I) Setup of VPN connection for your workstation

1) Click on Start button



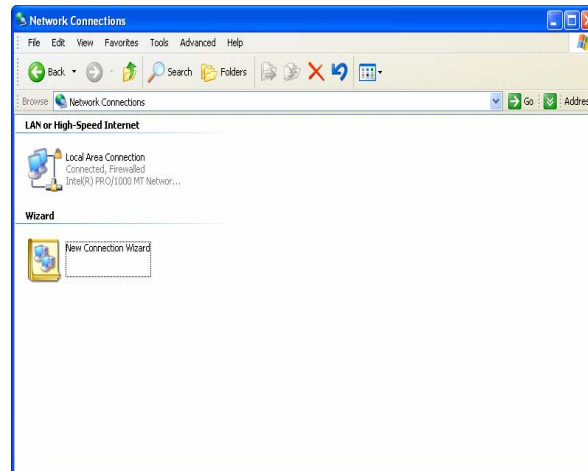
2) Select Control Panel



2) Select Network



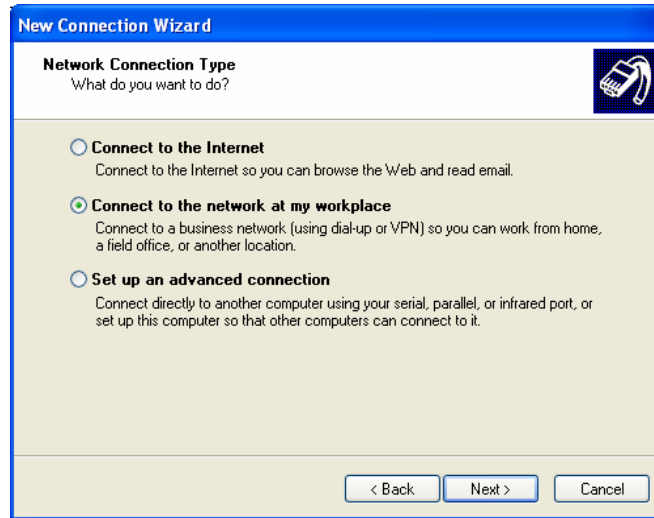
3) Select New Connection Wizard



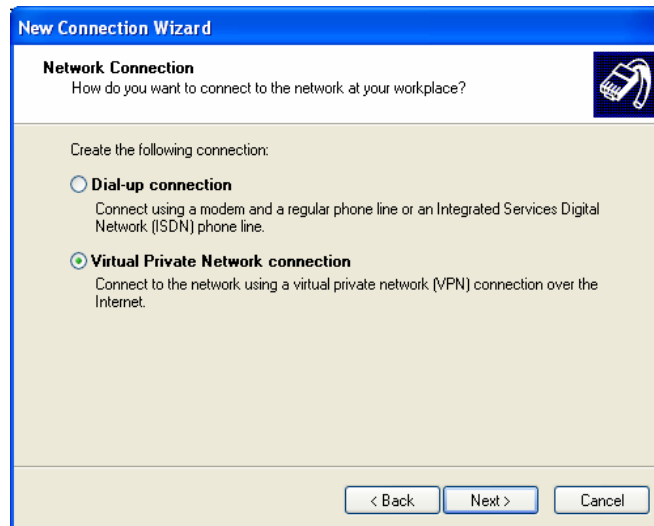
4) Click on 'next'



- 6) Click on the circle 'Connect to the network at my workplace' and then click on Next.

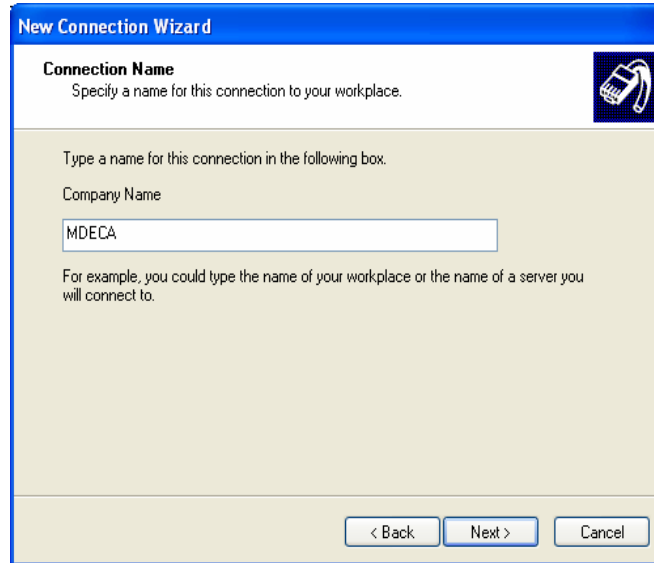


- 7) Click on the circle 'Virtual Private Network Connection' and then click on Next.



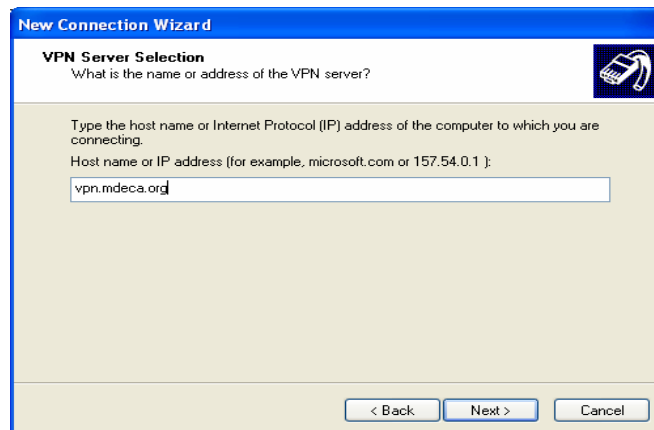
- 8) Click in 'Company Box' and type School Name (informational only) and then click Next.

I entered MDECA in the example below.



The screenshot shows a Windows dialog box titled "New Connection Wizard". The main heading is "Connection Name" with the instruction "Specify a name for this connection to your workplace." Below this, there is a text input field labeled "Company Name" containing the text "MDECA". A smaller instruction reads: "Type a name for this connection in the following box. For example, you could type the name of your workplace or the name of a server you will connect to." At the bottom right, there are three buttons: "< Back", "Next >", and "Cancel".

- 9) Click in 'Host name or IP' box and type vpn.mdeca.org and then click Next.



The screenshot shows a Windows dialog box titled "New Connection Wizard". The main heading is "VPN Server Selection" with the instruction "What is the name or address of the VPN server?". Below this, there is a text input field labeled "Host name or IP address (for example, microsoft.com or 157.54.0.1):" containing the text "vpn.mdeca.org". A smaller instruction reads: "Type the host name or Internet Protocol (IP) address of the computer to which you are connecting." At the bottom right, there are three buttons: "< Back", "Next >", and "Cancel".

- 10) Click in the box 'Add a shortcut to this connection to my desktop'.
Click the Finish button.



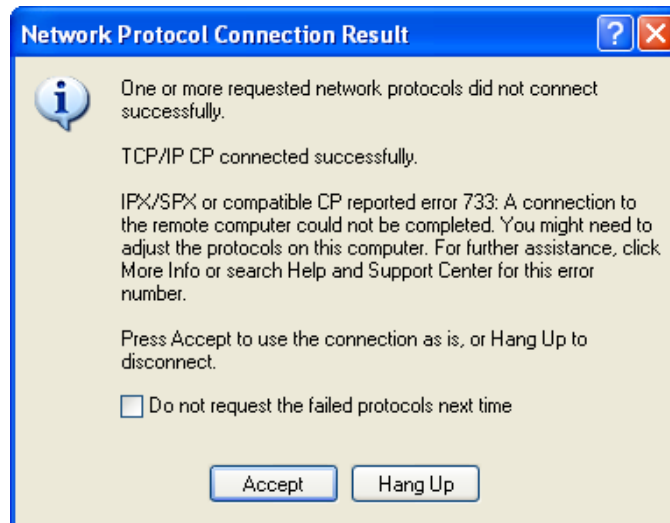
- 11) You will now be prompted to connect to a VPN server.
Subsequent connections can be done by double clicking on
the MDECA ICON located on your desktop.

II) Establish Connection to VPN.MDECA.ORG

- 1) Enter username and password as assigned and then click on Connect button,
to establish connection to VPN server.



2) You may receive this informational message, if so simply click 'accept'



3) You should now be successfully connected to MDECA's VPN server.
The next step is to OPEN Reflections as described in section III.

III) TELNET TO MDECA

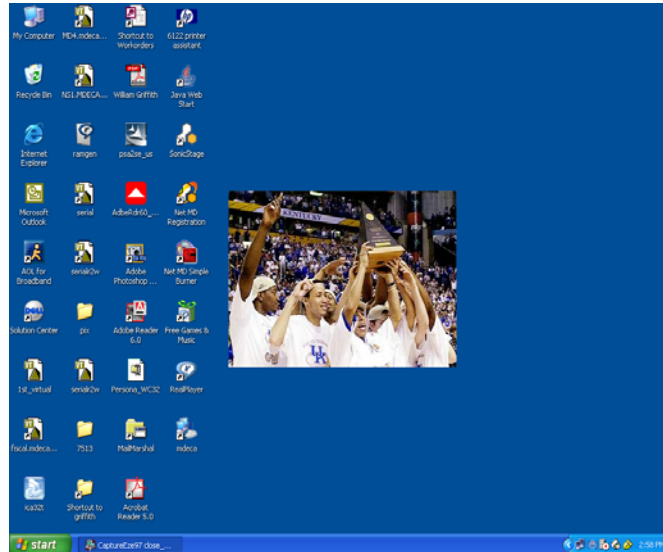
The steps in this section describe how to initiate a TELNET session.

1) Click Start

Select All Programs

Select Reflections (or simply select Reflections from ICON on desktop)

2) Upon completion of your Reflections session, you can disconnect from VPN.
To disconnect from VPN server, double click on MDECA icon that is on desktop.



3) Click on Disconnect button

