



DASLr

© 2005 MCOECN



DASLr Overview

DASLr is a collection of views that make DASL data easily available to ITCs and users. DASL can be used with an ODBC compliant application – i.e. Excel, Access, Filemaker Pro, D.U.C.K., SQL Server 2005 Reporting Services, Safari, Active Reports, etc. – to create custom reports using DASL data.

DASLr is supported by a community of DASL users. DASL Support is specifically addressed later in this document.



1. DASLr

DASLr is a collection of views that make DASL data easily available to ITCs and users via any ODBC connection. Several examples of ODBC compliant applications are given – D.U.C.K., SQL Server Reporting Services, MS Excel, MS Access. Please note that these are examples only – any ODBC compliant application can be used with DASLr.

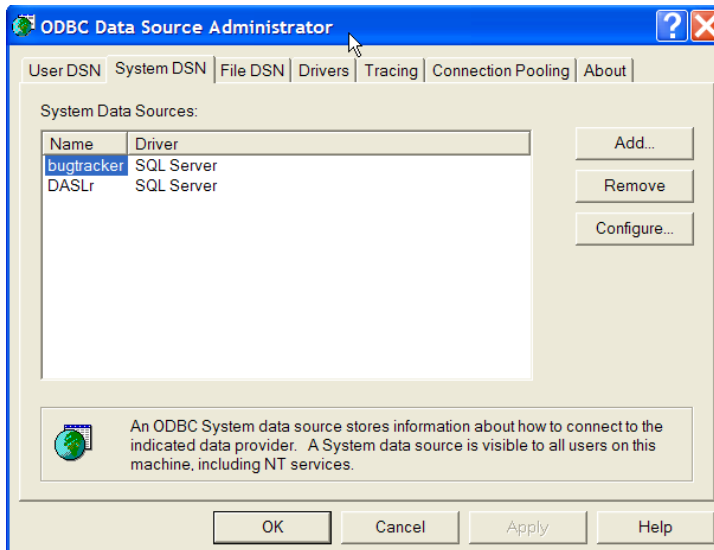
The following topics give ITCs recommendations on installing, configuring, and supporting DASLr.



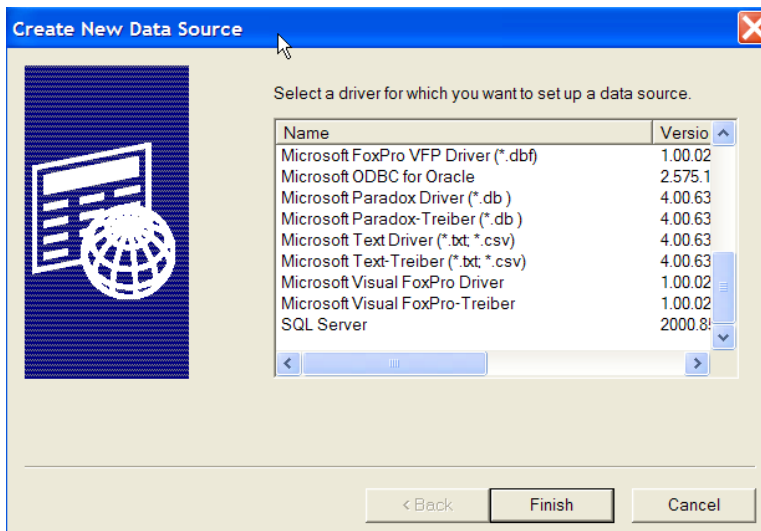
1C. Connecting to DASLr via ODBC

Before you can use DASLr with any ODBC compliant tool, you will need to set up ODBC connectivity to DASLr. Below are the steps to create this ODBC Connection.

- Go to Control Panel – Administrative Tools – Data Sources (ODBC)
- Click on the System DSN tab in the ODBC Data Source Administrator dialog box

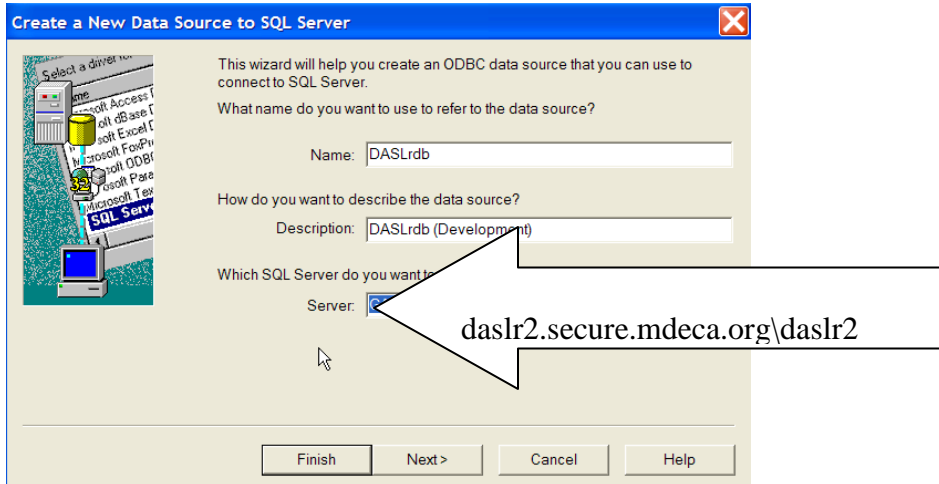


- Click Add button

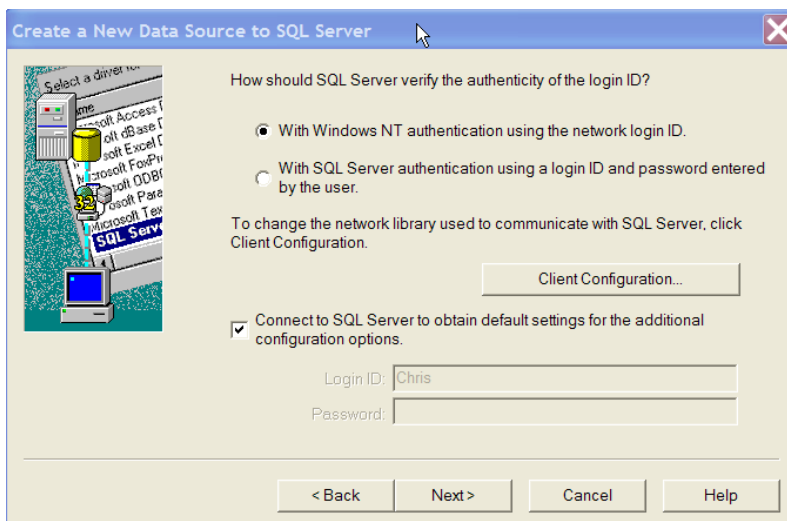




- Choose SQL Server as the driver for your data source
- Click Finish



- Name – Enter the name of your DASLr database
- Description – Enter a description of your DASLr database
- Server – Choose the server that your DASLr database resides on
- Click Next



- Choose “With SQL Server authentication using a login ID and password entered by the user.”



Create a New Data Source to SQL Server

Select a driver to use to connect to the data source.

How should SQL Server verify the authenticity of the login ID?

With Windows NT authentication using the network login ID.

With SQL Server authentication using a login ID and password entered by the user.

To change the network library used to communicate with SQL Server, click Client Configuration.

Client Configuration...

Connect to SQL Server to obtain default settings for the additional configuration options.

Login ID:

Password:

< Back Next > Cancel Help

- Click Next

Create a New Data Source to SQL Server

Select a driver to use to connect to the data source.

Change the default database to:

Attach database filename:

Create temporary stored procedures for prepared SQL statements and drop the stored procedures:

Only when you disconnect.

When you disconnect and as appropriate while you are connected.

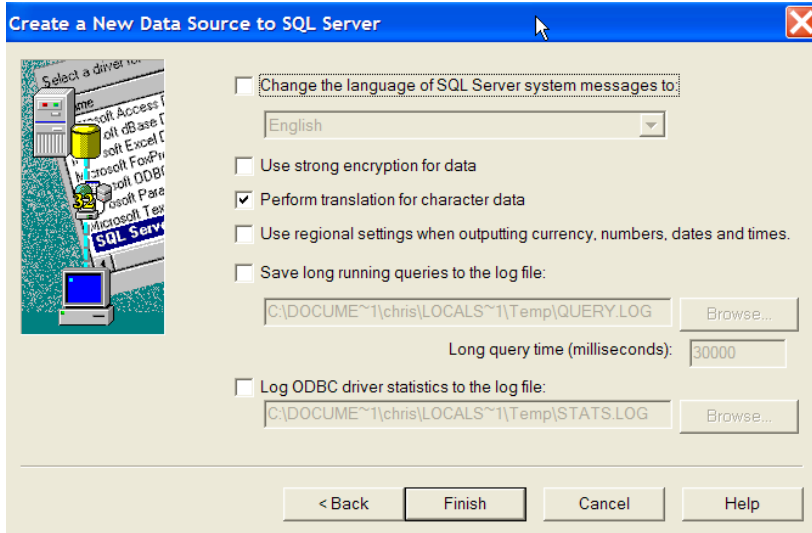
Use ANSI quoted identifiers.

Use ANSI nulls, paddings and warnings.

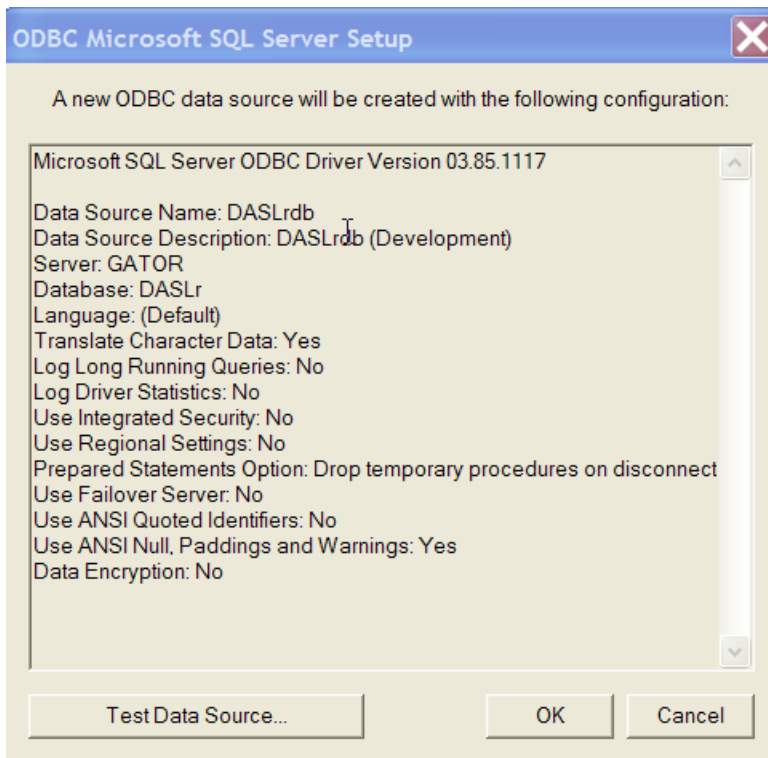
Use the failover SQL Server if the primary SQL Server is not available.

< Back Next > Cancel Help

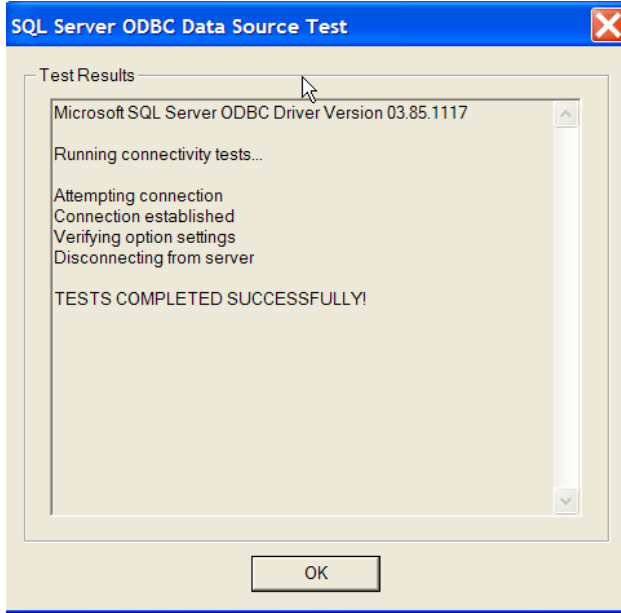
- Click Next



- Click Finish



- Click Test Data Source



- Click OK
- Click OK
- Click OK

You are now ready to use DASLr with any ODBC compliant application.

